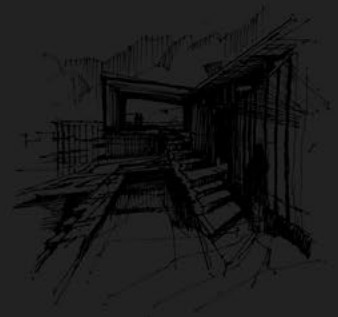


# Port Folio



# Who We Are ?

**We believe in Simplicity and we design the Futures in mind.**

**Our team's creative perspective brings together ideas from across cultures, activities, building types, events, and landscapes to realize a vision that connects clients and their dreams...**

**Be the design, Commercial, Residential or Recreational in nature, each project is a brand new beginning for us since we do not 'box our thinking' to a specific school of thought.**

**We, as a team will play with SPACE and ensure aesthetically, functional and emotional values to the client while helping to create a more comfortable life cycle in respect to art, culture, sociology, aesthetics, and light.**

**We respect and value our clients, their thinking and dreams. Through listening, observing and collaborating closely with our clients we discover opportunities to amplify the character of a design blended with our creativity. We always commit and drive ourselves to convert the dreams of clients to a reality, which is beyond their expectation. That's our PASSION and our SUCCESS.**

AMODA  
RATHNAYAKE  
ASSOCIATES







TEAM ARA & JAYA BUILDERS

Amoda Rathnayake. BA(HONS)interior designer(UK)

Gihan Chathuranga BSC(HONS) chartered eng MIE(SL) moratuwa

Architect MAHESH GANEGODA M.SC.(ARCH),B.SC(BE),AIA(SL)

H.k. Warnakulasuriya. B.S.C(ENG).C.ENG MIE(S.L) chattered electrical engineer

Rashmi De Tissera . BA(HONS)interior designer(UK)

Vimukthi Deshapriya. QS/engineering draught man

Gayan Dhanuka. Engineering /3d designer

Thushan Wickaramasinghe. Photographer undergraduate (btec)

Brayani Weerasuriya. QS Dip - AD Dip ( City&Guilds of London Institute) /engineering draught man









A M O D A  
RATHNAYAKE  
ASSOCIATES

# Folio

# -01

Diamond Cutters Ltd Panadura



# Factory Renovation

(Design 2015 | Construction 2016)











Diamonds were originally found and mined in India, Brazil, South Africa, Angola, Botswana, Namibia and Congo; however today, diamonds also come from Guinea, Lesotho, Sierra Leone, China, Tanzania, Ivory Coast, Guyana, Central African Republic, Canada, and Australia.

Ordering their gold in mixed in of 500 tons the same...

Diamonds are the hardest... The more the diamond is cut, the brighter it sparkles; NIRU Diamonds is one of the world's largest Diamond companies with a strong vertical integration from rough planning to precise diamond assortments. Amoda Rathnayake Associates (ARA) took the challenge in creating an unconventional workplace which houses 1,000 employees, who are committed to spread happiness being a part of celebratory moments in life.

MA

MB

MC

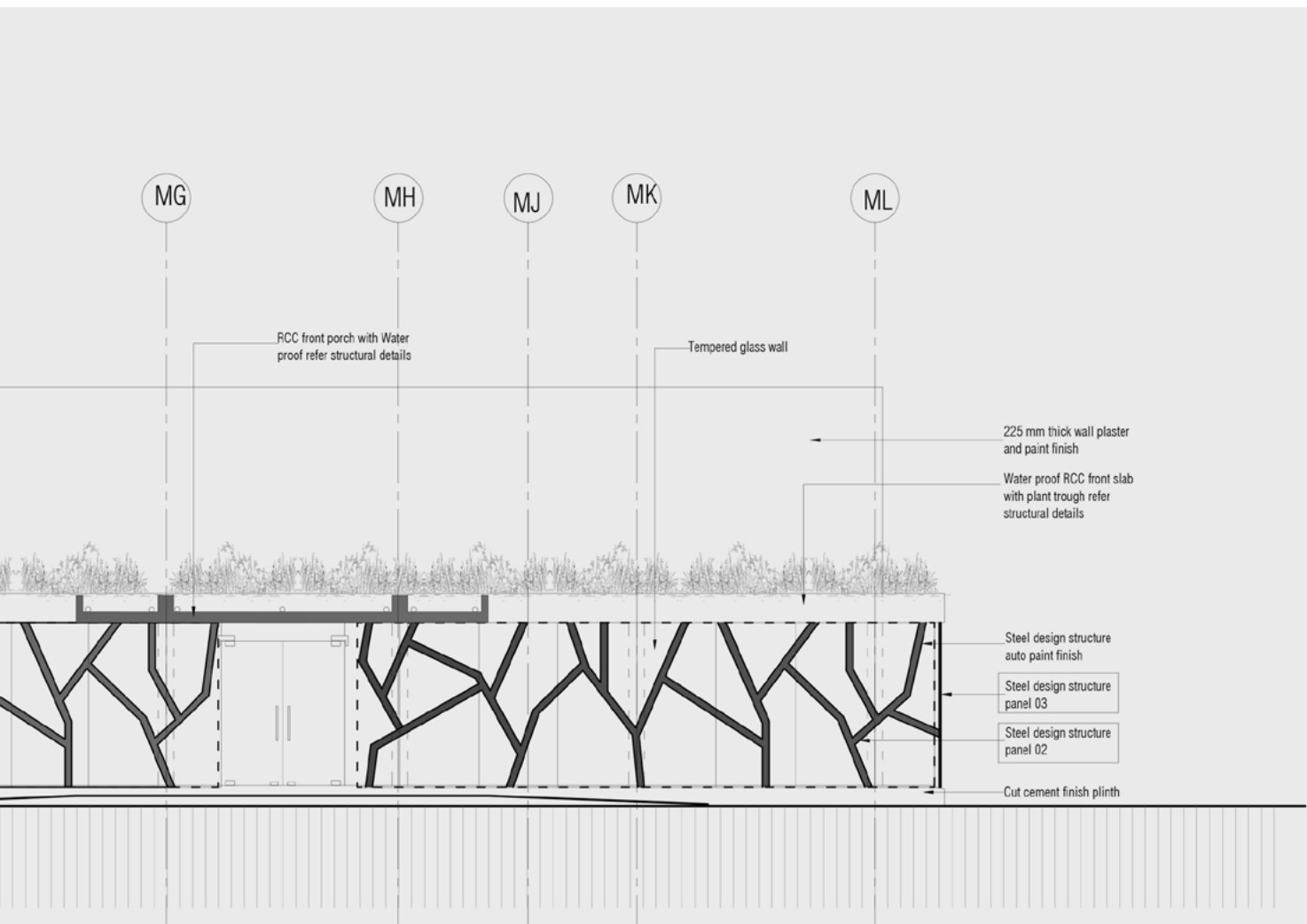
MD

ME

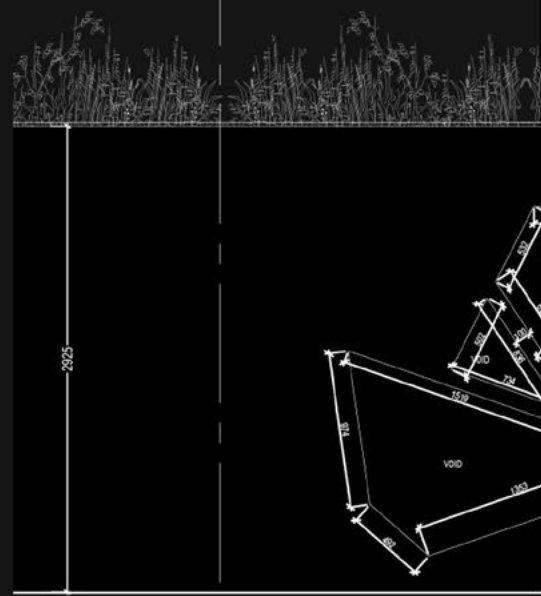
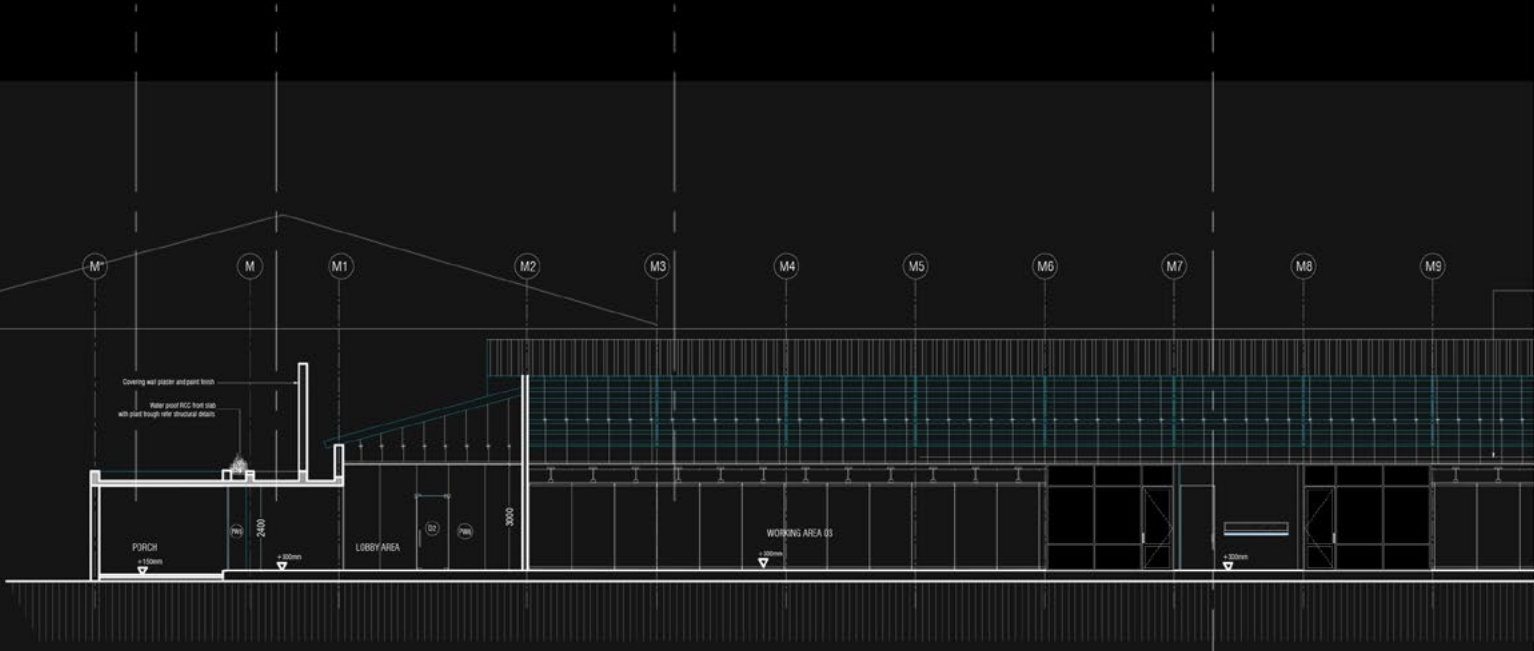
MF

Steel design structure  
panel 02

FRONT ELEV



ATION WITHOUT FRONT PORCH WALL













During the construction period

**“Architecture is a visual art  
and the buildings speak for themselves”**













uring  
e rang  
and  
esting  
mond-

der, offe  
oly, and  
iamond:  
atch Bra  
ition as  
ed Diam  
ium, in  
the entire  
etween a



Manufacturing facilities is designed  
of goods, enabling  
and professionalism. We  
investing aggressively in new  
diamond planning and ma

rt holder offering you enhanced  
supply and assurance in the  
our diamonds. We are a vendor  
Watch Brands. Jewelers and  
's position as a market leader  
alibrated Diamonds, we are a  
premium, high-quality 3EX  
ers in the entire planning proces  
erty between all aspects of









## NIRU

NIRU LANKA EXPORTS

Pvt. Ltd  
was formed in year 2012 and, is the brain child of NIRU GROUP ISRAEL. This factory showcases the adoption of latest technology in the diamond cutting and polishing industry the world has seen.

Our manufacturing facilities is designed to plan and manufacture a specific range of goods, enabling it to attain high levels of efficiency and professionalism. We stay ahead of the competition by investing aggressively in new and relevant technologies for Diamond planning and manufacturing.

Niru is a DTC Sight holder, offering you enhanced consistency, reliability in your supply, and assurance in the authenticity and integrity of your diamonds. We are a vendor of choice to the world's leading Watch Brands, Jewelers and Retailers. In addition to Niru's position as a market leader in Baguette, Princess, and Calibrated Diamonds, we are also a leading manufacturer of premium, high-quality 3EX Rounds. Niru involves customers in the entire planning process by working in perfect synergy between all aspects of our business.



**ROUND BRILLIANT**  
The most brilliant cut shape (usually with 58 facets) is the most popular and most requested diamond shape. Thus, there are various theories (about light behavior) and also mathematical calculations, all only had the goal to enhance its brilliance and thus the fire in the diamond.







A M O D A  
RATHNAYAKE  
ASSOCIATES

# Folio

# -02

Ceylon Tobacco Company (CTC)

# Office Refurbishment

(Design 2016 | Construction 2017)



CEYLON TOBACCO  
COMPANY

A member of the British American Tobacco Group



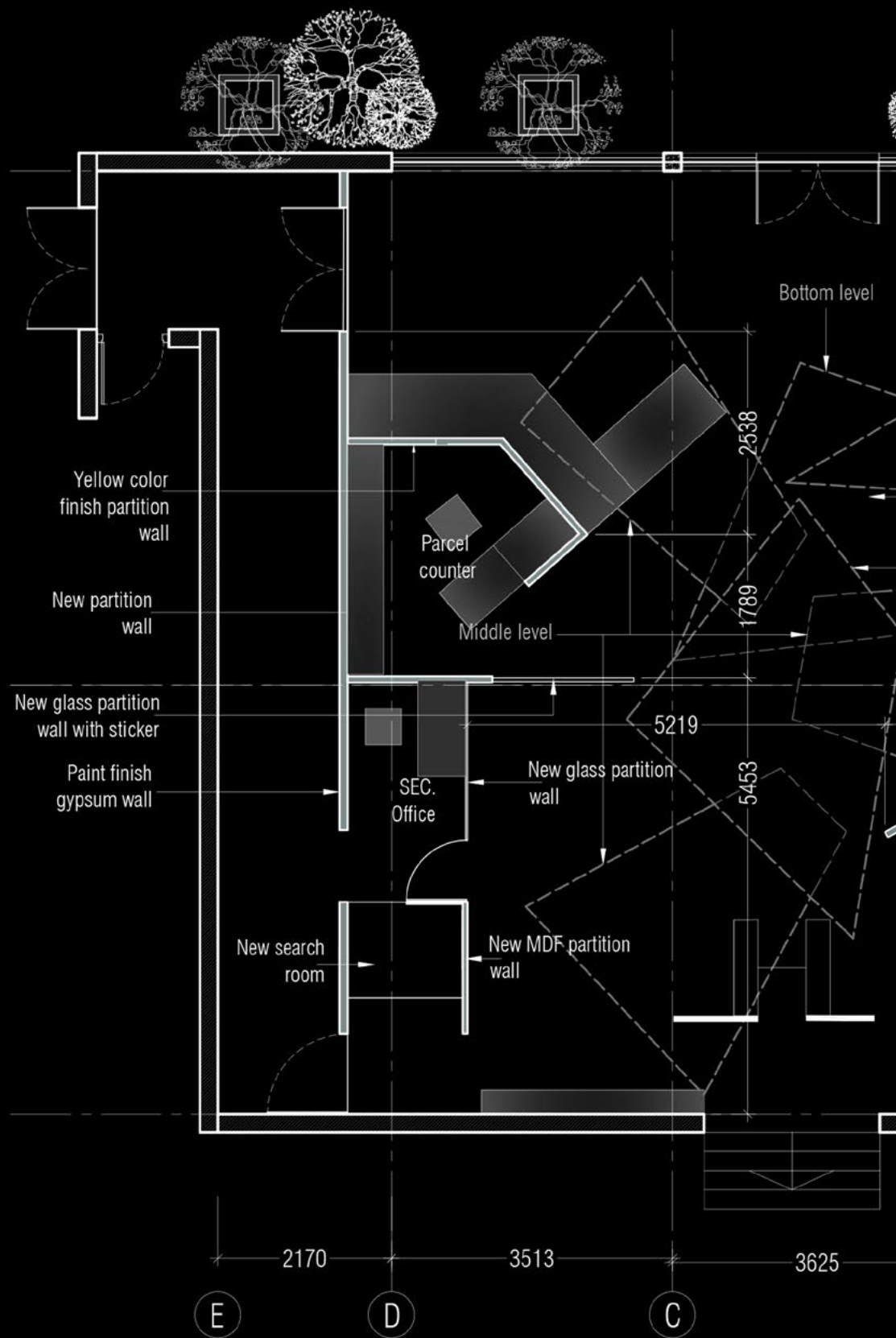






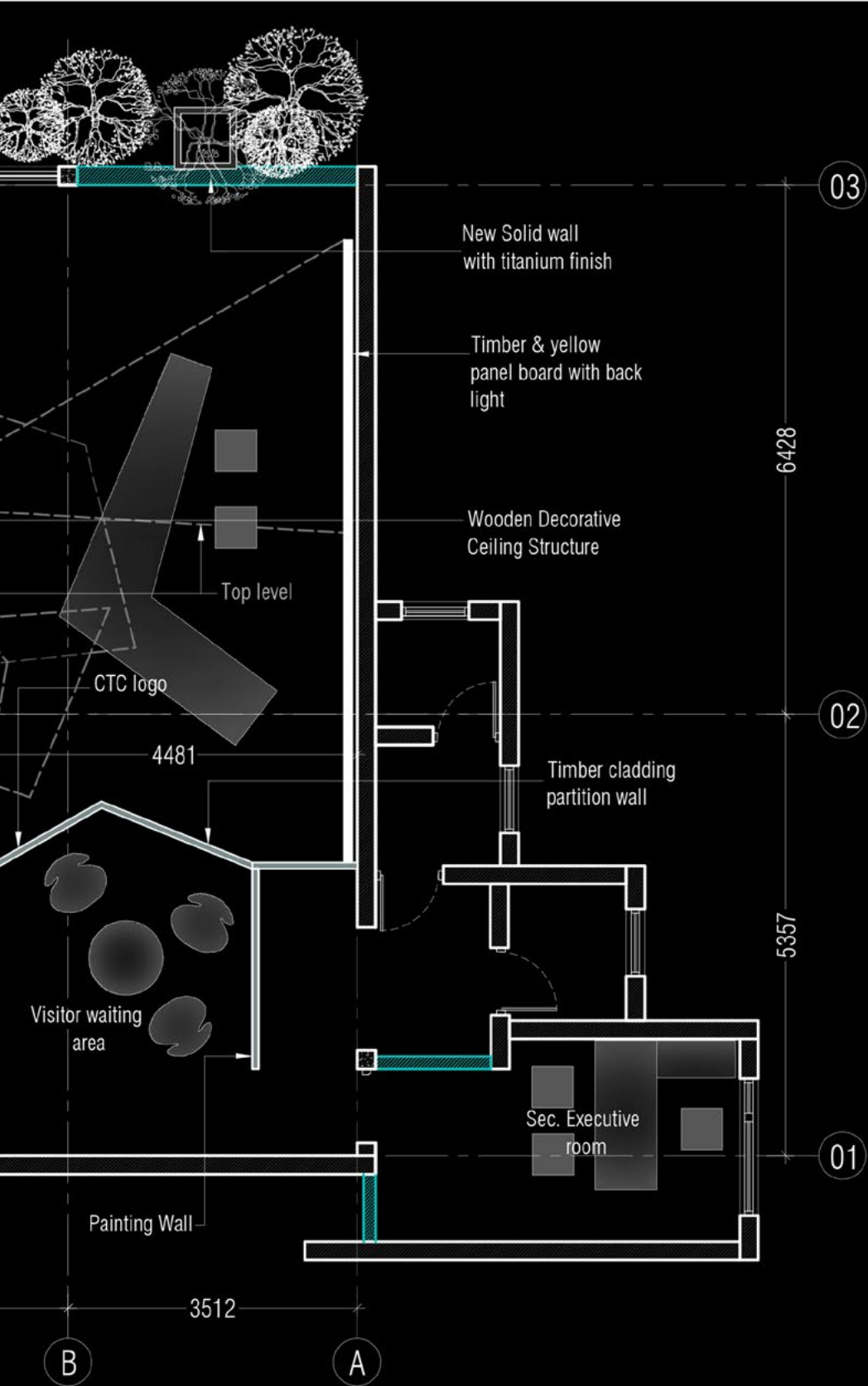
First impressions are an important part of human interaction which will easily translates over into an office environment as well. Hence, the reception or lobby areas can be an important element of the office - allowing the visitors to have positive feelings and impressions as they enter to an office for the first time.

Take a peek as to how ARA created a an integrated reception and a visitor lobby at  
Ceylon Tobacco Company PLC



CONSTRUCTION





LAYOUT

**Talent hub  
with over 200+  
global professionals**

**Best contributor to  
net tax revenue**



We are the 2nd most  
of choice, successful

Key Brands  
while Dur  
cigarettes  
controvers  
responsib

We are p  
the British  
consumer  
generates













## Who we are

Ceylon Tobacco Company PLC (CTC) is one of Sri Lanka's most economically impactful respected corporates. As the country's largest individual tax contributor, we contributed over 98 Billion to the state as tax in 2016.

We are the 2nd most valuable listed company in Sri Lanka and as an employer of choice, successfully developed a pool of 264 global professionals.

Key Brands in our portfolio include John Player Gold Leaf (JPGL), our most while Dunhill SWITCH heads our premium segment. As the only legal manufacturer of cigarettes in the country we understand that the industry we operate in is a controversial one, which makes it all the more important that we act in a responsible manner.

We are proud to have the distinction of being one of the few companies in the British American Tobacco Group to operate a fully integrated 'crop to consumer' supply chain which infuses value, employment and generates livelihood to the nation at large.

MARKET LEADERS OF CIGARETTES IN SRI LANKA

5000+ retail outlets

Largest CDD with over 200+ global professionals

JOHN PLAYER GOLD LEAF and DUNHILL



High highest contribution to government tax revenue





We are the 2nd most valuable listed company in the world, with a market cap of over \$60 billion.

Key Brands in our portfolio include... while Dunhill SWITCH heads our... cigarettes in the country we understand... controversial one, which makes... responsible manner.

We are proud to have the distinction of being the British American Tobacco Company's 'most valued' consumer supply chain, which generates livelihoods for millions.







**“Fashion and interior design are one and the same”**



A M O D A  
RATHNAYAKE  
ASSOCIATES

# Folio

# -03

Boutique hotel - Nuwaraeliya



# Hotel Design

( Design 2015 | Construction 2016 )







Steel furring frame work  
with super flex flat ceiling

3" X 4" Timber wall plate

R.C.C. Beam

Brick wall

Timber hand rail



SECTION B-B



SECTION A-A









**"I believe that the way people live  
can be directed a little by architecture."**

- Tadao Ando -







Amoda Rathnayake Associates blends creativity and modernity in Nuwara Eliya... A boutique hotel, which is a picturesque retreat, pairing the hill country architecture with a feel of modernity. Overlooking the Gregory Lake and the Race Course, holiday retreat is designed with a modern touch of interior design elements while ensuring the exterior finishes blend with the traditional architectural styles of Nuwara Eliya. The project is indeed a symbol of modern design architecture among the majestic mountains, tethered with the sublime beauty of surrounding greenery.



A M O D A  
RATHNAYAKE  
ASSOCIATES

# Folio

# -04

Employers Federation of Ceylon (EFC)



# Working in Style

(Design 2016 | Construction 2017)







Site before renovation













Founded in 1929, Employers Federation of Ceylon is the renowned body to represent employers in matters pertaining to the employment law in Sri Lanka. The challenge was thrown to ARA, to transform a traditional legal advisory office set up in to a dynamic, open environment to support their vision in offering a a bundle of innovative services to their clientele. A lawyer, being a professional who is qualified to offer advice about the law or represent someone in legal matters we ensured the maintain a high degree of class and discipline in our design. Creative thinking was revolving around the 'light' and 'colours'. The project went on a theme of Grey, resembling the EFC's role of guiding their clients for better negotiations.







**Create,  
Don't Talk .**



A M O D A  
RATHNAYAKE  
ASSOCIATES



# Folio

# -05

Neil International.

# Studio Designs

(Design 2014 | Construction 2014)











Amoda Rathnayake Associates took the challenge of converting an old building in to a modern Gem Studio and an office space. A gem is a piece of mineral crystal, which is cut and polished but the beauty of it is visible when it is exposed to the light. Hence, we got inspired by the beams of lights where the design is developed on a theme of light for exterior to interior. A unique, faceted lit up façade resembles the facets of a gem and the open, elegant office is a true symbol of 'class' to its potential customers.

















**"Each new situation requ**





quires a new architecture."



A M O D A  
RATHNAYAKE  
ASSOCIATES



# Folio

# -06

Lush Skin Clinique

# Hospital Designs

(Design 2015 | Construction 2015)









Skin Studios exist to make people look better than their former appearance. The challenge for ARA is to make LUSH an appealing space for a customer to walk in. This project is a classic example of ARA's capability in converting small, old buildings in to a facility of tranquil or an edgy atmosphere. The spatial design, choice of colours, materials and lighting was given much thought to influences people's senses.











# Cafe Designs

(Design 2016 | Construction 2016 )









GENTLEMEN THIS IS  
**REFINEMENT**



Designs to deal with small spaces can be a bane for any design architect. But they can also be a blessing in design disguise. These small spaces are often a catalyst for change, forcing a design architect to craft clever design ideas. Most recent project of Amoda Rathnayake Associates at the Sinhalese Sports Club depicts how they overcame the said challenges.









A M O D A  
RATHNAYAKE  
ASSOCIATES

# Folio

# -08

Ceylon Tobacco Company (CTC)



# Office Designs

(Design 2016 | Construction 2016 )













A holistic design approach incorporating the BAT's Global Talent Brand elements into their workplace. The design provides a creative solution that brings people together in ways they can be at their best. The challenge was to transform a traditional office layout into a humming hive of engagement and productivity, which we've successfully achieved.











**There are  
360 degrees,  
so why stick  
to one ?**



A M O D A  
RATHNAYAKE  
ASSOCIATES



# Folio

# -08

ENGENUITY (SLIIT Metropolitan Campus)

# Meeting







3

CLEVER

4

"Work



3

CLEVER

"Work hard





and, be kind, amazing things will  
happen.











Passion  
is oxygen of the soul











A M O D A  
RATHNAYAKE  
ASSOCIATES



# Folio

# -08

Coats Thread Exports (Pvt) Ltd

## Who We Are

With a rich heritage dating back to the 1760s, Coats is the world's leading industrial thread manufacturer and a major player in the Americas textiles crafts market. Headquartered in the UK we employ 19,000 employees in over 60 countries across six continents around the world.





- Human Resources
- Procurement
- Finance
- Boardroom
- Managing Director

## Our Heritage

Our interactive timeline provides an overview of how Coats has developed since the company was founded over 250 years ago.

1730s  
Henry Mowbray established needle manufacture at Redditch, UK and hand sewing begins to flourish

1820s  
Until the 1820s James Coats worked mainly in the silk and canton crepe trade building a profitable business

1840s  
Paton and Baldwin started production in Darlington, UK

Patons and Baldwin started producing high quality sewing cotton with a soft finish in Darlington, UK

Cotton sp  
Thread fa





Design creates Culture... Culture shapes Values... Values determine the Future.. The latest creation of Amoda Rathnayake Associates in transforming a formal, traditional office set up to a modern workspace which provides a variety of spaces and destinations for employees to inhabit movement throughout the day enabling a great work culture.



“

FOCUS ON BEING  
PRODUCTIVE  
INSTEAD OF  
BUSY

”

Choose a job you love,  
and you will never have to  
work a day in your life.  
CONFUCIUS





GREAT THINGS  
IN  
BUSINESS ARE  
NEVER DONE BY  
ONE PERSON.  
THEY'RE DONE  
BY A TEAM OF  
PEOPLE.

A FUTURE  
LEADER IS NOT A  
COUNSELOR BUT  
A MANAGER OF  
CHALLENGES.

Success is no accident. It is hard work, perseverance, learning, studying, sacrifice and most of all, love of what you are doing or learning to do.  
Paulo

Success is no accident. It is hard work, perseverance, learning, studying, sacrifice and most of all, love of what you are doing or learning to do.  
Paulo





MEETING

“

FOCUS ON BEING  
PRODUCTIVE  
INSTEAD OF  
BUSY

”









Help young people. Help small guys.  
Because small guys will be big.  
People will have the seeds you bury in their minds.  
When they grow up, they will change the world.

There will be obstacles.  
There will be mistakes.  
There will be things you don't see there.




# MEETING









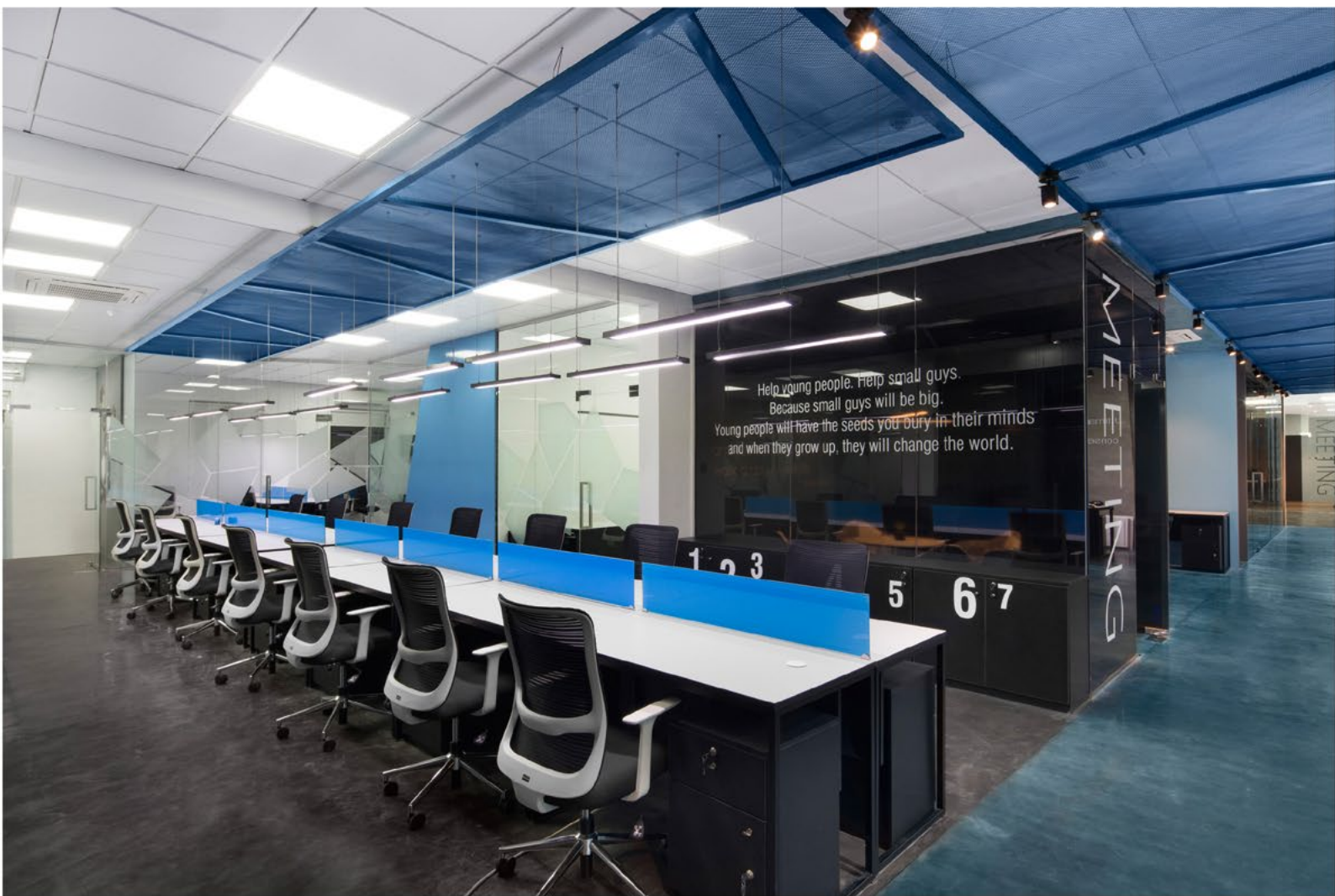


“Choose a job you love,  
and you will never have to  
work a day in your life”

CONFUCIUS











MEETING

CHILL  
MODE  
ON

Leadership is not about a dramatic crowning act. It's about keeping your team focused on a goal and motivated to do their best to achieve it, especially when the stakes are high and the consequences really matter. It is about laying the groundwork for others' success, and then standing back and letting them shine.

Chris Hedges







Help young pe  
Because sm  
Young people will have t  
and when they grow u

1  
2  
3  
4



“  
FOCUS ON BEING  
PRODUCTIVE  
INSTEAD OF  
BUSY”

I can't change the direction of the wind,  
but I can adjust my sails to always reach  
my destination.  
Logan Dizon

CHILL  
MODE  
ON























## Our Heritage

Our interactive timeline provides an overview of how Coats has developed since the company was founded over 250 years ago.

Patons and Baldwin started production in Bothwell, Scotland, selling high quality sewing cotton around the world with a soft finish. Darlington, UK

1730s  
Henry Milward established needle manufacture at Redditch, UK and hand sewing begins to flourish

1820s

Until the 1820s James Coats worked mainly in the silk and canton crepe trade building a profitable business

Cotton spinning mill established in Bothwell, Scotland  
Thread factory established in Darlington, UK

Patons and Baldwin started production in Darlington, UK

1940s

- Human Resources
- Procurement
- Finance
- Boardroom
- Managing Director





A M O D A  
RATHNAYAKE  
ASSOCIATES



# Folio

# -09

CEO OFFICE -SLIIT













































**Whether you're the Chief Executive Officer of a successful start-up or an established Fortune 500 Company, it's important to have a work space that suits the corporate title.**

**A CEO is primarily responsible to steer the organization towards achieving its set objectives, come up with strategies to sustain the business in an agile environment and to build and maintain necessary corporate relationships.**

**To accomplish the same, a CEO needs an office space that is dynamic, luxurious, relevant to their specific working style and business needs while still leaving a solid impression on potential business partners and clients.**

**This is the most recent 'design-build' project of Amoda Rathnayake Associates in creating a personalized office space for a leading CEO**

**Whether you're the Chief Executive Officer of a successful start-up or an established Fortune 500 Company, it's important to have a work space that suits the corporate title.**

**A CEO is primarily responsible to steer the organization towards achieving its set objectives, come up with strategies to sustain the business in an agile environment and to build and maintain necessary corporate relationships. To accomplish the same, a CEO needs an office space that is dynamic, luxurious, relevant to their specific working style and business needs while still leaving a solid impression on potential business partners and clients.**

**This is the most recent 'design-build' project of Amoda Rathnayake Associates in creating a personalized office space for a leading CEO**



















**Whether you're the Chief Executive Officer of a successful start-up or an established Fortune 500 Company, it's important to have a work space that suits the corporate title.**

**A CEO is primarily responsible to steer the organization towards achieving its set objectives, come up with strategies to sustain the business in an agile environment and to build and maintain necessary corporate relationships. To accomplish the same, a CEO needs an office space that is dynamic, luxurious, relevant to their specific working style and business needs while still leaving a solid impression on**



























A M O D A  
RATHNAYAKE  
ASSOCIATES



# Folio

# -10

Engenuity (Pvt) Ltd







Transformation  
Humanity enough

What is able to take into account of such it might  
of a kind that, unless you go to the other end of the  
to the bank. Then looking at the bank, it's  
of a kind that is a result of a process of a  
of a kind that is a result of a process of a  
of a kind that is a result of a process of a

Humanity enough

What is able to take into account of such it might  
of a kind that, unless you go to the other end of the  
to the bank. Then looking at the bank, it's  
of a kind that is a result of a process of a  
of a kind that is a result of a process of a  
of a kind that is a result of a process of a

Humanity enough

Humanity enough

Humanity enough

Who we are  
We are a team of people who are passionate about  
technology and innovation. We are a team of people  
who are passionate about technology and innovation.

Who we are  
We are a team of people who are passionate about  
technology and innovation. We are a team of people  
who are passionate about technology and innovation.

Our Strengths

In association with Sri Lanka's  
Technology and the largest Ni  
Engineering (Pte. Ltd) offers the  
of a kind that is a result of a process of a

Our Mission

To be a true value  
that enables to avail  
infrastructure, soft  
to be a "Resource"  
integrating Omni ch

Our Strengths  
In association with Sri Lanka's  
Technology and the largest Ni  
Engineering (Pte. Ltd) offers the  
of a kind that is a result of a process of a



IFICATION  
PLE - AMAZING  
SKILL  
CHALLENGES OO  
GROWTH  
ABILITIES GOALS  
HUMAN ENOUGH  
INTELLIGENCE  
CLASSICS  
POWER OOO CLASSICS  
MASTERPIECE

DEPTH  
3D PRINTING





JUDICIOUSNESS

JOB PRO  
CLEAR THINKING  
CRAZY CULTURE  
GREAT WORK  
MAIN EDISON  
INSIGHT  
REACTIVITY  
GOOD

SAGACITY



**BUSINESSES** MANUFACTURING EXCELLENCE  
BALANCE IDENTITY DYNAMIC INTENSIFICATION  
SENSE ABILITIES CREATIVE PEOPLE AMAZING  
HONESTY CHANGES INNOVATION HONESTY PEOPLE AMAZING  
PROJECT POWER COINING SKILL  
FAMILY STANDARDS OF PROFESSIONALISM HUMAN ENOUGH  
EDISON IMPROVE EXCELLENT SENSE SHAKING IDEAS INTELLIGENCE  
GREAT WORK MOTIVATION INNOVATION POWER CLASSICS  
MODERN GENERATION HAPPINESS CLASSICS MASTERPIECE







W  
e  
l  
c  
o  
m  
e

JOB PROF  
CLEAR THINKING  
CRAZY CULTURE

GREAT WORK  
MAN EDISON  
INSIGHT  
REACTIVITY  
GOOD

SAGA CITY

TECH  
GOALS

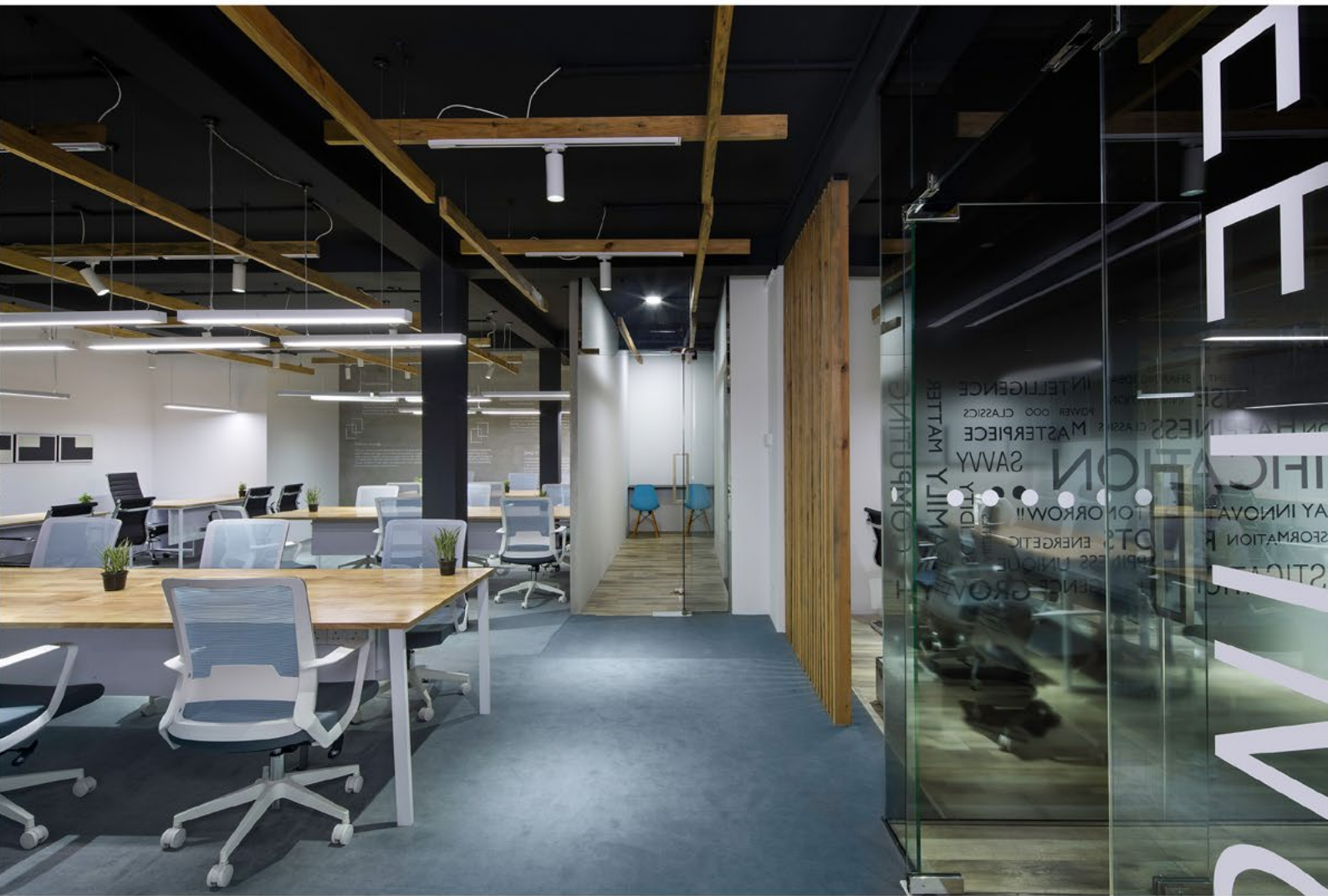
D

TECHN

DIS













**“Design is coming to grips with one’s real lifestyle, one’s real place in the world. Rooms should not be put together for show but to nourish one’s wellbeing”.**

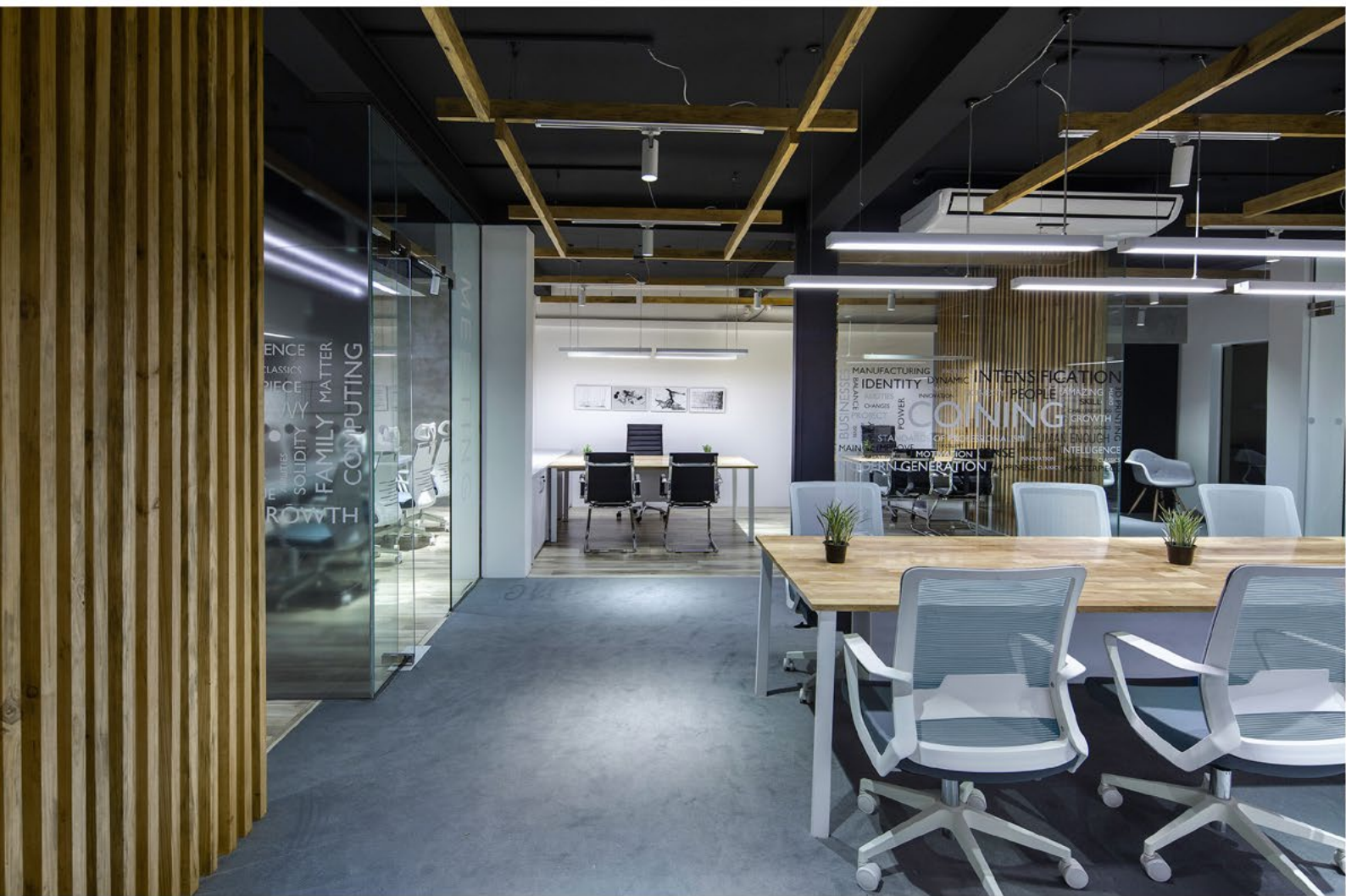
**-Albert Hadley-**



JOB PROFOUNDNESS EXPERIENCE VISION  
CLEAR THINKING HUMANITIES INTELLIGENCE POISE DEPTH  
CRAZY CULTURE  
GREAT WORK MAIN EDISON SAGACITY  
INSIGHT TECHNOLOGY KNOWLEDGE SAVVY  
REACTIVITY GOALS DISTANCE DOWNWARD INTELLIGENCE  
GOOD ACUMEN FORESIGHT SOPHISTICATED  
JUDICIUM BUSINESS  
FAMILY SOLIDITY ABILITY HAPPINESS SMART  
STABILITY













A M O D A  
RATHNAYAKE  
ASSOCIATES



# Folio

# -11

National Development Bank  
of Sri Lanka



Mobile Banking App  
celebrates  
**BILLION**  
worth of transactions for 2017  
significant milestone.





Mobile Banking App  
celebrates  
**1 MILLION**  
of transactions for 2017  
...cant milestone.

W.i.n.d.o.w  
**NDB bank**  
Our Commitment. Your Success.

W.i.n.d.o.w  
**NDB bank**  
Our Commitment. Your Success.







A M O D A  
RATHNAYAKE  
ASSOCIATES



Tasked with developing a unique brand identity for NDB NEOS, Sri Lanka's first ever 'Phy-gital' bank branch, Amoda Rathnayake Associates immersed themselves in the client's work scope and envisioned next gen customer experience.

We redeveloped a cavernous space by concealing next gen banking platforms, lighting, interactive panels and audiovisual systems to make way for flawless surfaces. An exceptionally ethereal aesthetic pervades throughout, with a palette of white and shades of blue and red blended with the most modern IT infrastructure and platforms provided by Arimac Digital NDB Bank













**NDB NEWS**

**NDB bank**  
Our Commitment. Your Success.

Services and Products to Cater to Your Needs

- Accounts
- Loans
- Specialty
- Investment
- Insurance
- Real Estate
- Private Banking
- Corporate
- Other Services

Scan QR Code for more details

**NDB bank**  
Our Commitment. Your Success.

**EXTRA 20% OFF ON EVERYTHING**  
For NDB Credit Cards

**12 MONTHS 0% INSTALLMENT PLANS AVAILABLE**

EVERY SUNDAY | MONDAY | TUESDAY

More info >

# Testimonials





“ I was extremely happy with the design provided by Amoda. She really understood what we asked for the job. It truly reflected the briefing given, that was to bring some modernity to our “Centennial” company through some small but, very impactful interventions to the office. We are not a tech company but we were able to achieve the WOW effect to visitors and most importantly to our esteemed employees. They loved their new workplace, even if it was initially only the meeting room, the juicer bar and the smoking lounge. I was not able to see the second phase in person but what I saw through pictures the final result is simply amazing! In a nutshell, I strongly recommend Amoda as a Design Services Solution Provider!”

Felicio Ferraz  
MD and Chief Executive Officer

# Testimonials





What Amoda and her team created for us is simply amazing. The transformation of the 2nd floor working space has not only given a 'new lease of life to our office', but it seems to have energized my colleagues who use it. It has also become the envy of my member company officials and have even drawn accolades from corporates who are usually associated with modern & trendy work places for their employees. The user friendly nature is a definite advantage....it's a far cry from how the floor used to look & feel like when I was over there. I am glad my colleagues are working in an environment that personify their professionalism. I actually expect Amoda to better her effort on the 4th floor, as I we had no hesitation in re-hiring this talented young architect cum designer.

Kanishka Weerasinghe  
Director General

Employers' Federation of Ceylon



A M O D A  
RATHNAYAKE  
ASSOCIATES



JAYABUILDERS (PVT) LTD



[www.ara.lk](http://www.ara.lk)  
[amoda@ara.lk](mailto:amoda@ara.lk)  
0718141441 - 0773863308